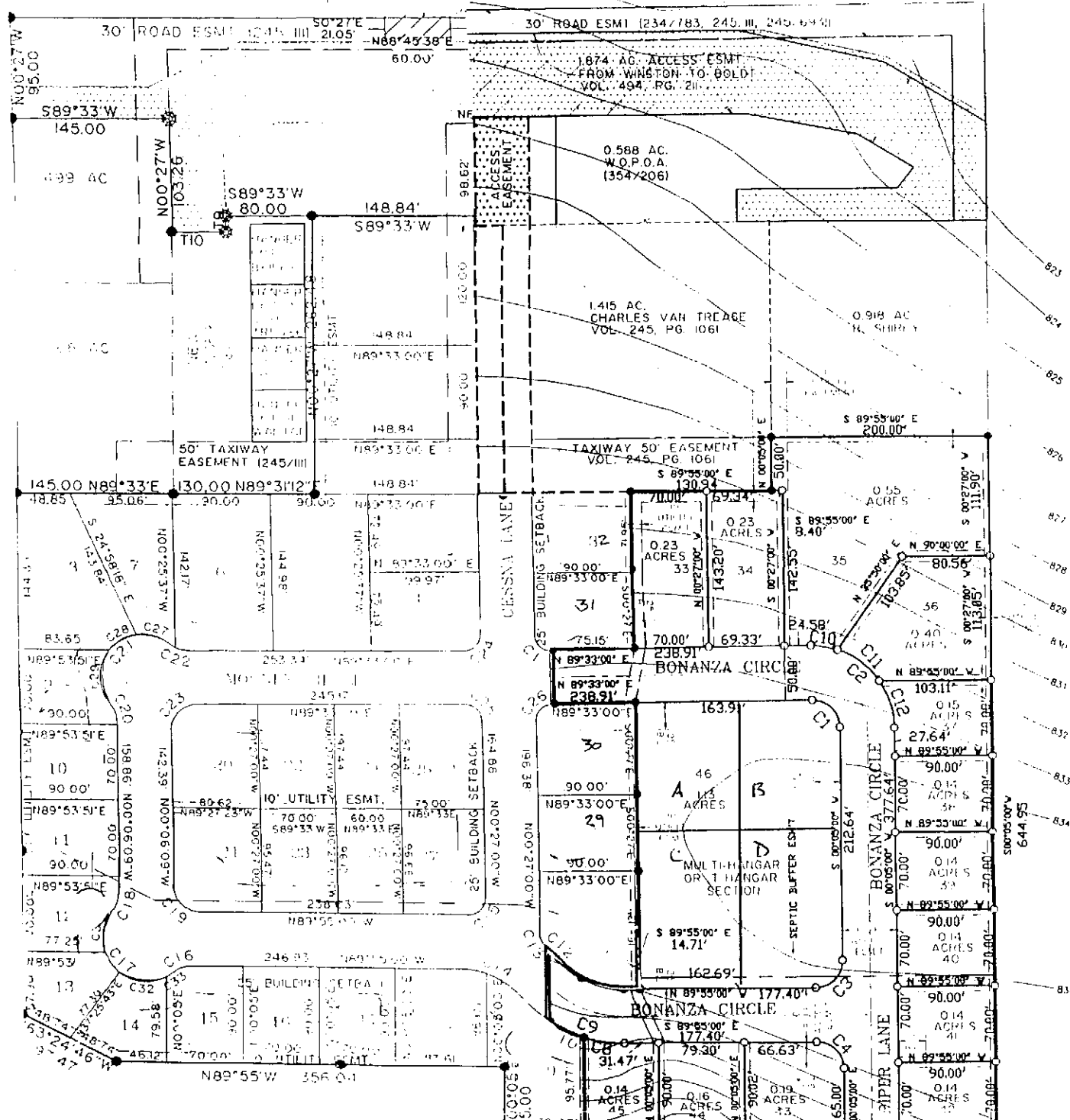
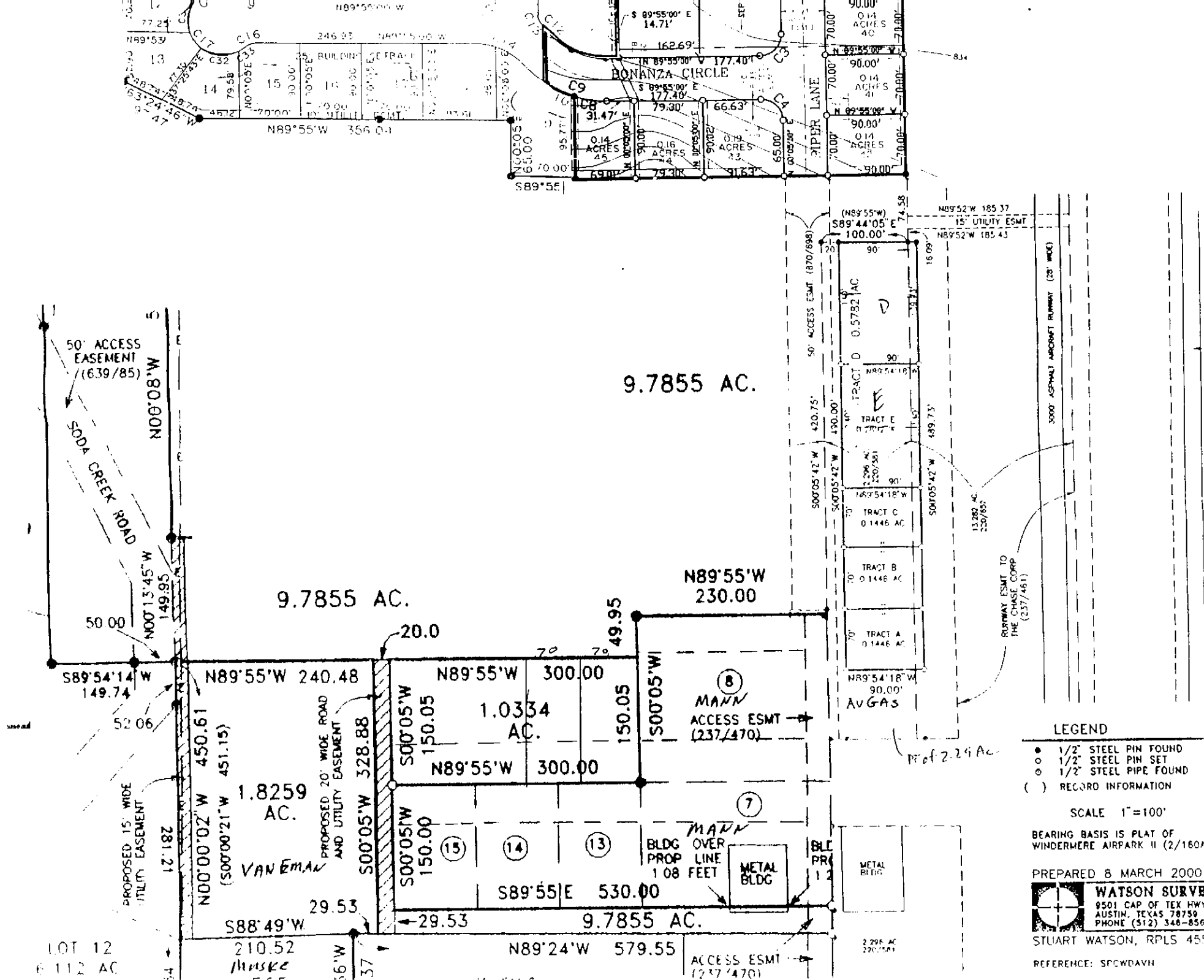




Airpark



RUNWAY EASEMENT VOL. 237 PG. 461



- LEGEND**
- 1/2" STEEL PIN FOUND
 - 1/2" STEEL PIN SET
 - ⊙ 1/2" STEEL PIPE FOUND
 - () RECORD INFORMATION

SCALE 1"=100'

BEARING BASIS IS PLAT OF WINDERMERE AIRPARK II (2/160)

PREPARED 8 MARCH 2000

WATSON SURVEY
 9501 CAP OF TEX HWY.
 AUSTIN, TEXAS 78759
 PHONE (512) 348-8561

STUART WATSON, RPLS 45F

REFERENCE: SPOWDAVH

9.7855 AC.

9.7855 AC.

1.0334 AC.
 MANN
 ACCESS ESMT
 (237/470)

1.8259 AC.
 VAN EMAN

9.7855 AC.

TRACT G 0.5782 AC
 TRACT F 0.1446 AC
 TRACT E 0.1446 AC
 TRACT D 0.1446 AC
 TRACT C 0.1446 AC
 TRACT B 0.1446 AC
 TRACT A 0.1446 AC
 AV GAS

LOT 12
 6.112 AC

Muske

ACCESS ESMT
 (237/470)

2.296 AC
 220/541

Prof 2.24 Ac

RURWAY ESMT TO
 THE CHASE CORP
 (237/461)

3000' ASPHALT AIRCRAFT RUMWAY (28' WIDE)

PROPOSED 15' WIDE
 UTILITY EASEMENT

PROPOSED 20' WIDE ROAD
 AND UTILITY EASEMENT

50' ACCESS
 EASEMENT
 (6.39/85)

50' ACCESS ESMT (870/898)

ACCESS ESMT
 (237/470)